

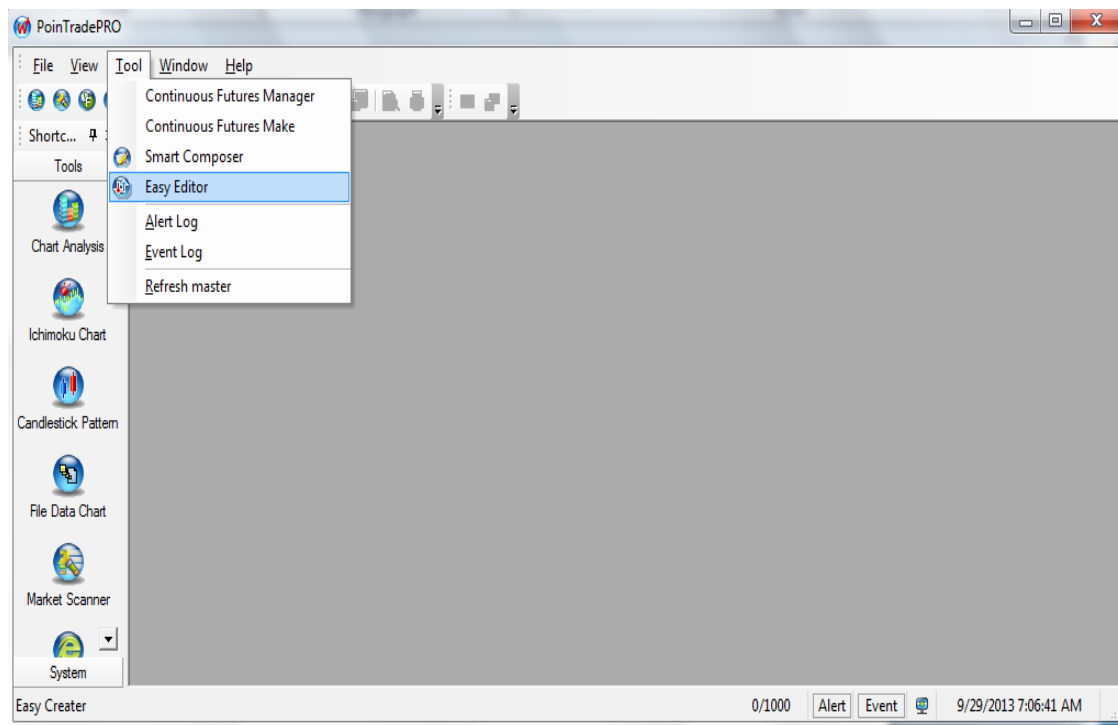
Easy Editor

Easy Editor is a strategy editor that is utilized to easily create your own code by editing and combining already existing technical indicators' input values without direct framing of complicated modification. Therefore beginners who are unfamiliar with complicated programming languages can easily and simply create a strategy using Easy Editor. However keep in mind that the strategy created by Easy Editor cannot produce optimization.

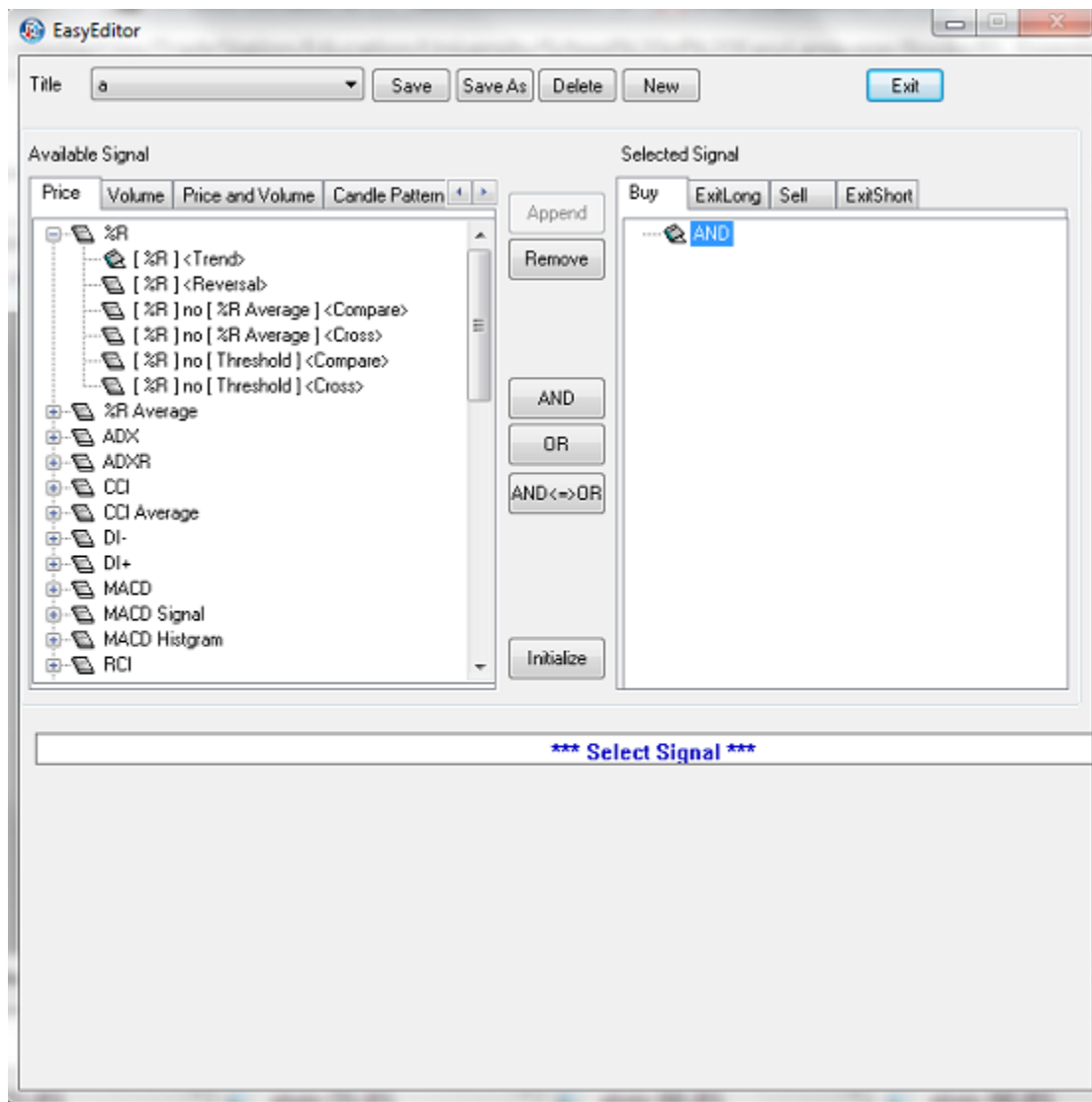
1. How to Start Easy Editor

Use the following procedure to launch Easy Editor on the PoinTradePRO platform:

Select ***Tool*** > ***Easy Editor***



Once Easy Editor opens, you will see the following screen:



As you can see, there is an extensive list of technical indicators on the left-hand side to choose from. The list includes indicators based on Price, Volume, Price and Volume, Candle Pattern, Money Management, Time Management, and Position Management.

1) Indicators

Price Indicators

Available Signal

Price Volume Price and Volume Candle Pattern

- %R
- %R Average
- ADX
- ADXR
- CCI
- CCI Average
- DI-
- DI+
- MACD
- MACD Signal
- MACD Histogram
- RCI
- Cutlers RSI
- Cutlers RSI Average
- RSI
- RSI Average
- TRIX
- TRIX Average

- Mental of Investment Line
- Mental of Investment Line Average
- Swing Index
- Stochastics Slow D
- Stochastics Slow K
- Stochastics Fast D
- Stochastics Fast K
- Volatility Historical
- Price to Average Diff
- Disparity
- ATR Band
- Swing
- Parabolic SAR
- Bollinger Band
- Envelope
- Price Lowest/Highest
- Price
- Price Average

- + Momentum
- + Momentum Average
- + ROC
- + ROC Average
- + Linear Regression

Volume Indicators

Available Signal

Price Volume Price and Volume Candle Pattern

- Volume
 - [Volume] <Trend>
 - [Volume] <Reversal>
 - [Volume] no [Volume Average] <Compare>
 - [Volume] no [Volume Average] <Cross>
 - [Volume] no [Volume Lowest] <Compare>
 - [Volume] no [Volume Lowest] <Cross>
 - [Volume] no [Volume Highest] <Compare>
 - [Volume] no [Volume Highest] <Cross>
- + Volume Lowest/Highest
- + Volume Oscillator
- + Volume Average
- + Volume ROC

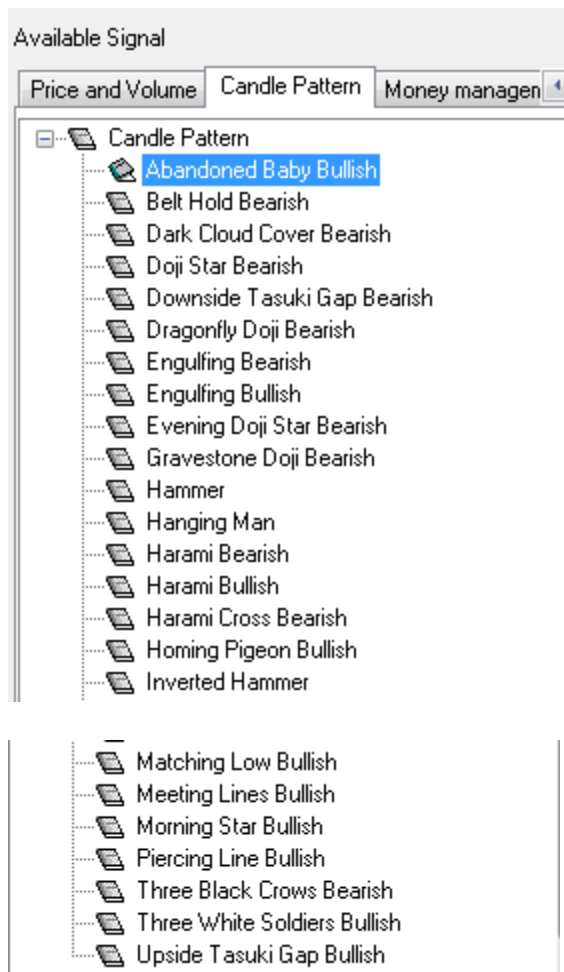
Price and Volume Indicators

Available Signal

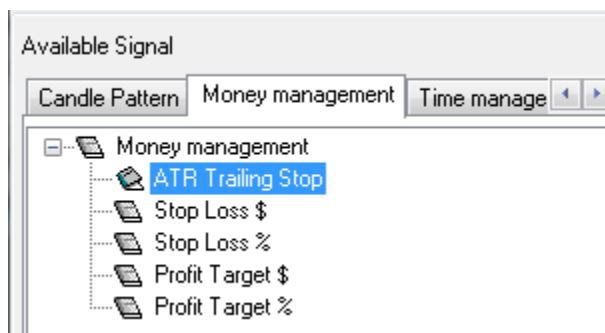
Price Volume Price and Volume Candle Pattern

- OBV
 - [OBV] no [OBV Lowest] <Compare>
 - [OBV] no [OBV Lowest] <Cross>
 - [OBV] no [OBV Highest] <Compare>
 - [OBV] no [OBV Highest] <Cross>
- + OBV Lowest/Highest
- + Accumulation Distribution Line
- + Accumulation Distribution Lowest/Highest

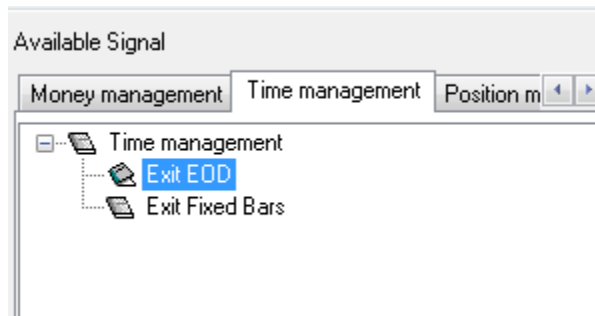
Candle Pattern Indicators



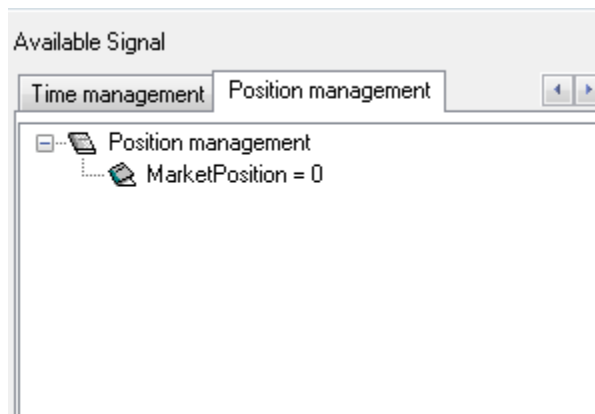
Money Management Indicators



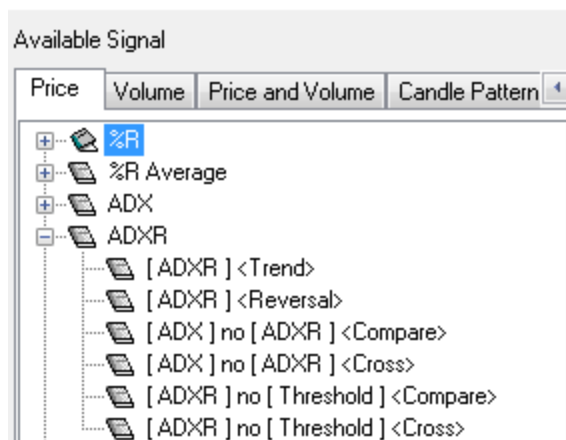
Time Management Indicators



Position Management Indicators



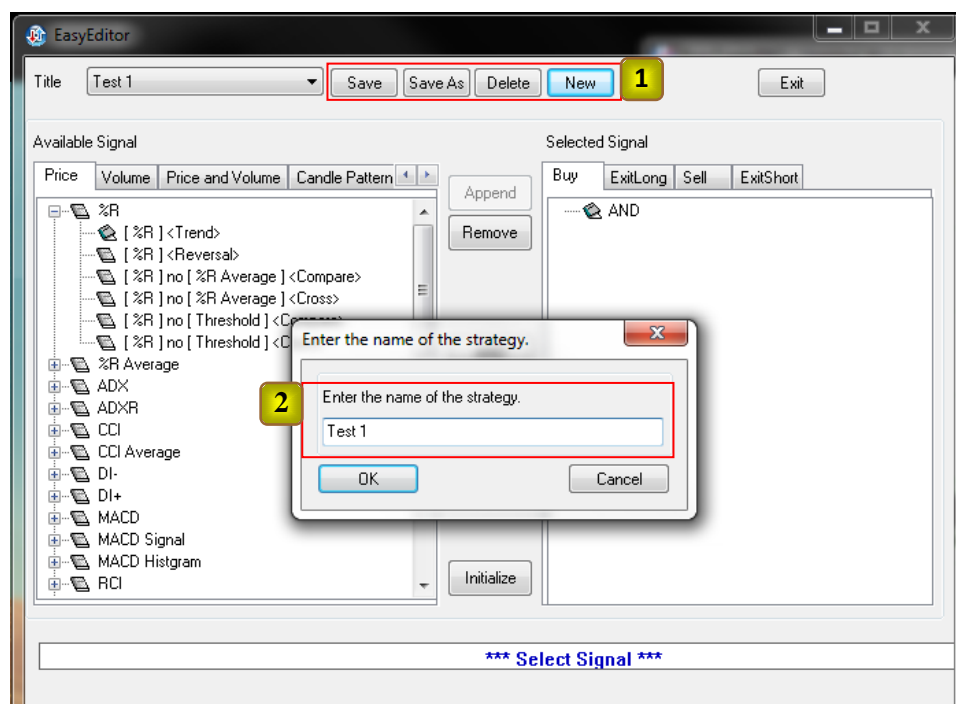
In order to expand some of the indicators on the list, you will simply click on the “+”:



2. How to Use Easy Editor

1) To Create a New Strategy

- Select the *New* tab **1**
- Enter a new name of the strategy on the dialog **2**
- Once you have typed in the name of the strategy, click *OK*.



2) To Save a Strategy Name

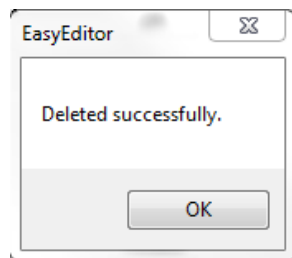
- To save the current edited strategy under the existing name, select the **Save** tab.

3) To Change a Strategy Name

- To change the current strategy name, select the **Save As** tab.
- Once you have typed in the name of the strategy, click **OK**.

4) To Delete a Strategy Name

- Navigate to the **Title** drop-down box and select strategy.
- Select the **Delete** tab and click **OK**.

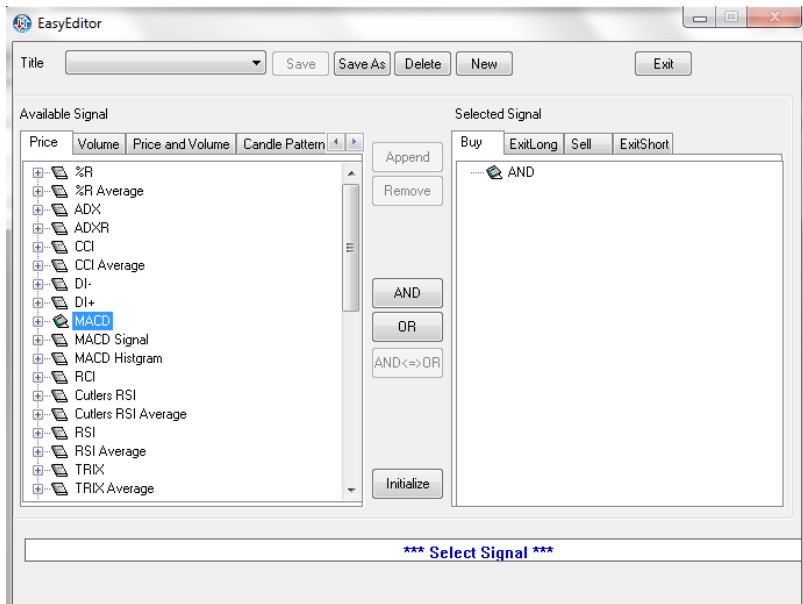


3. How to Create a Strategy

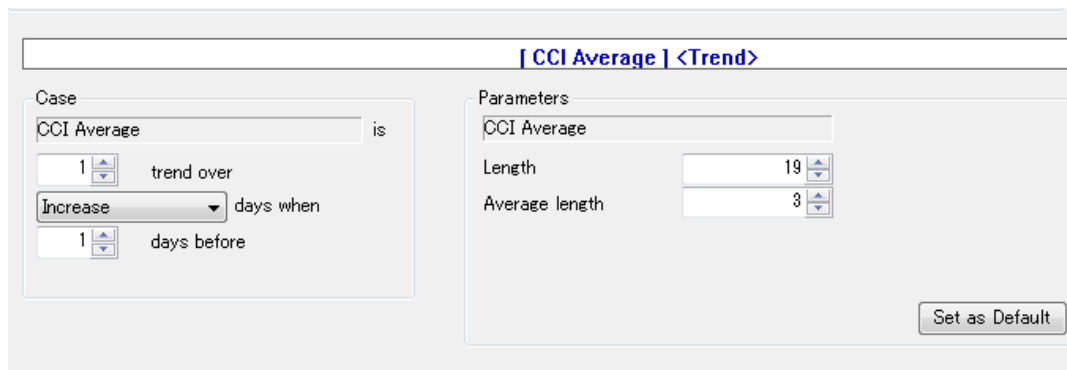
In order to create your strategy, you will need to select and combine the different indicators from the list under the Available Signals. They are currently divided into the following groups:

Price, Volume, Price and Volume, Candle Pattern, Money Management, Time Management, and Position Management

Click on and select the main group, then click on a specific indicator, and double click on the indicator or click the **Append** button.



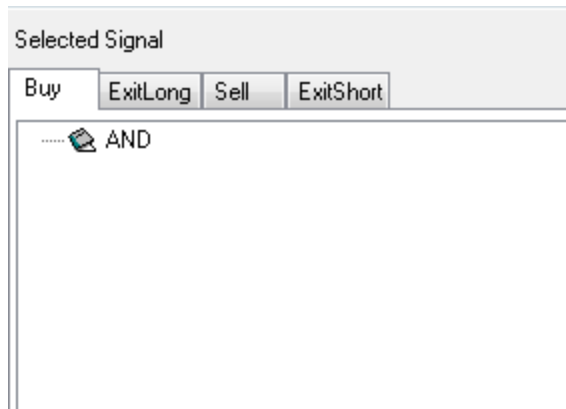
After selecting an indicator, the user can customize the specifications as desired using Case, the reference period, and Parameters. The specifications will appear in the bottom of the Easy Editor as shown below:



If you want to set the current indicators as default, click on the button of *Set as Default*.

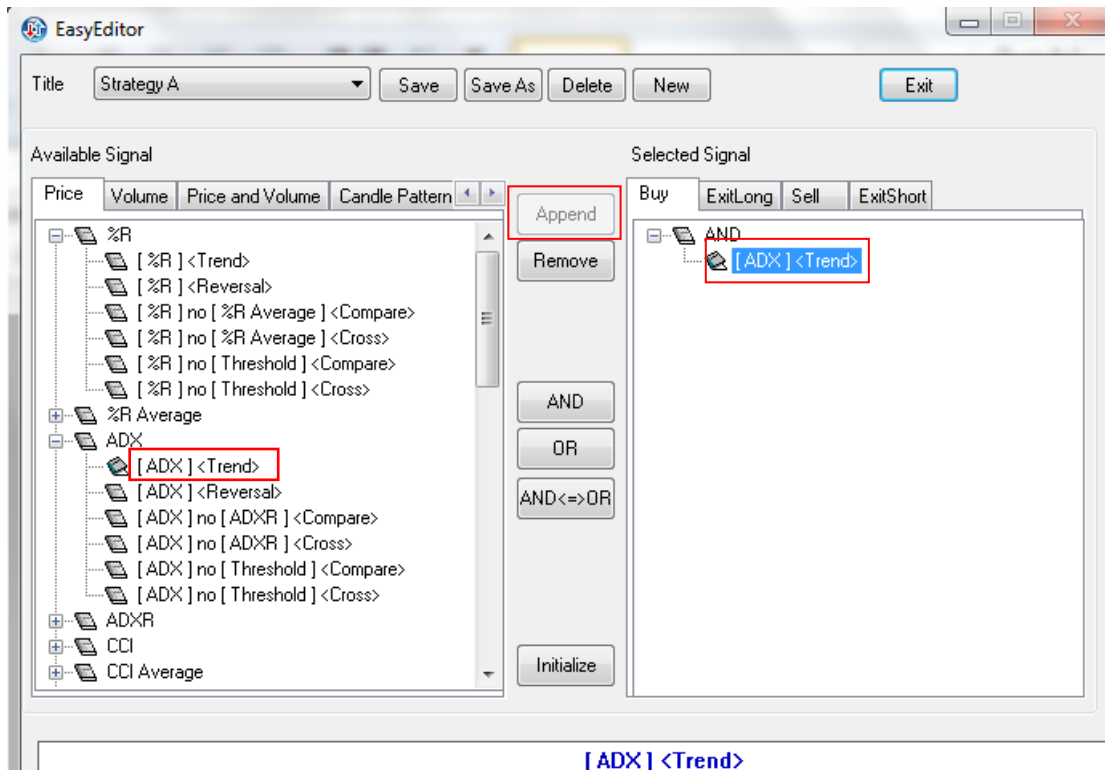
4. Strategy Add/Delete

On the right-hand side of the Easy Editor, you will see that the “Selected Signal” box is divided into four categories: *Buy / ExitLong / Sell / ExitShort*

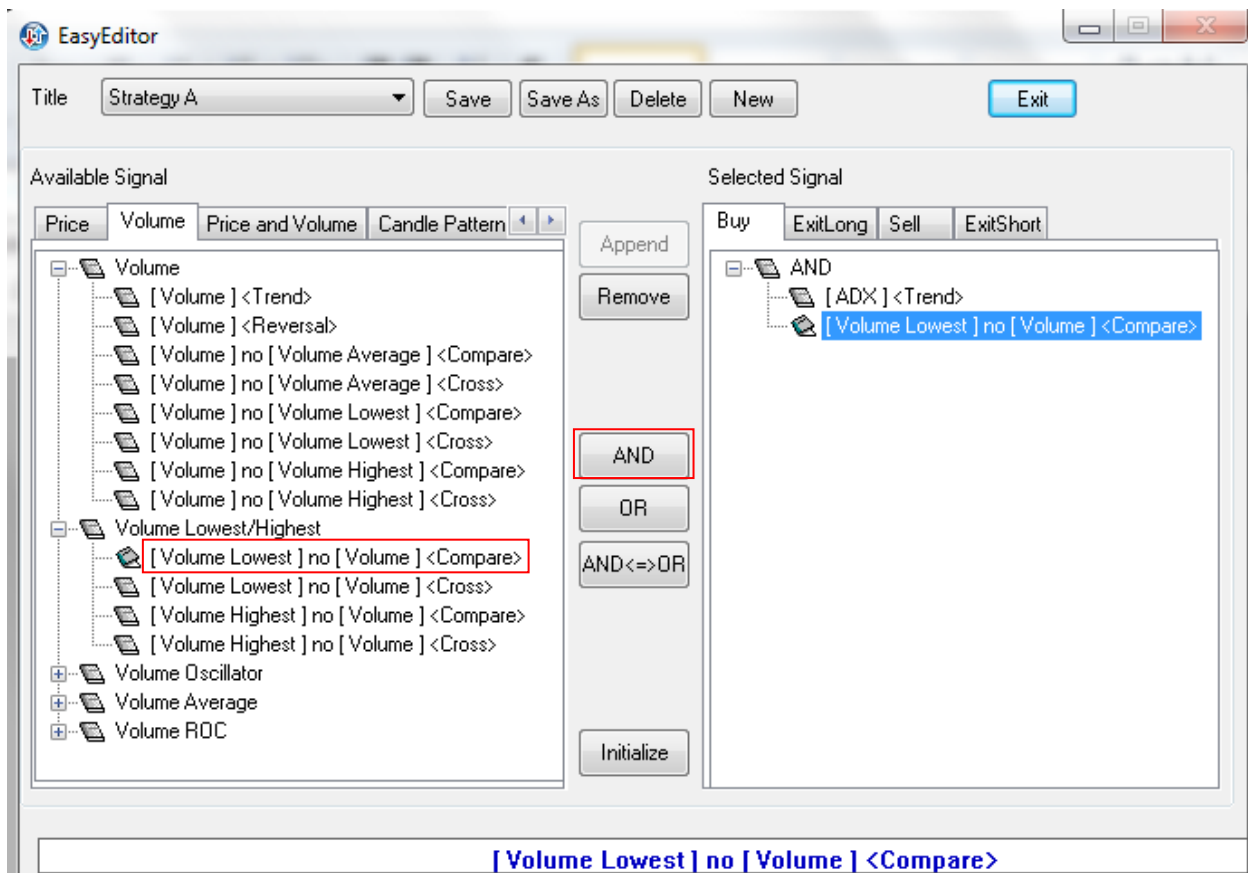


- After selecting **Buy**, **ExitLong**, **Sell**, or **ExitShort**, the user will then select an indicator(s) to incorporate into the strategy. Depending on the strategy, you may apply an indicator to the Buy position and the Sell position simultaneously. Clicking on each position on the right-hand side, select and append indicators from the left-hand side.

- 1) **Append** : In order to move the desired indicator to the “Selected Signal” window on the right-hand side, the user will need to either click on the ‘Append’ button or double-click the selected strategy.

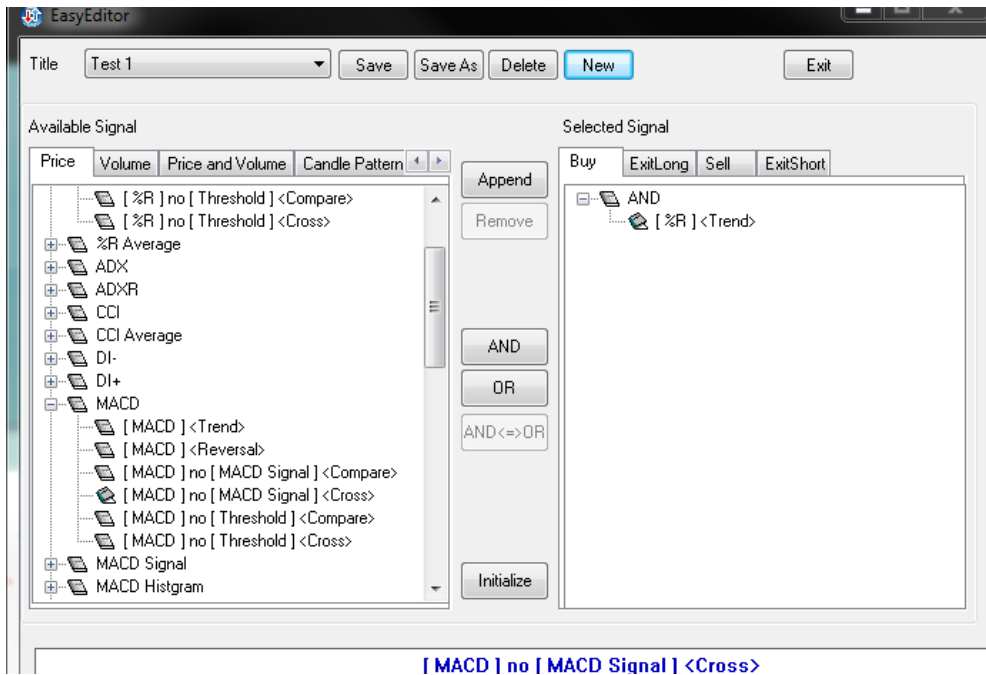
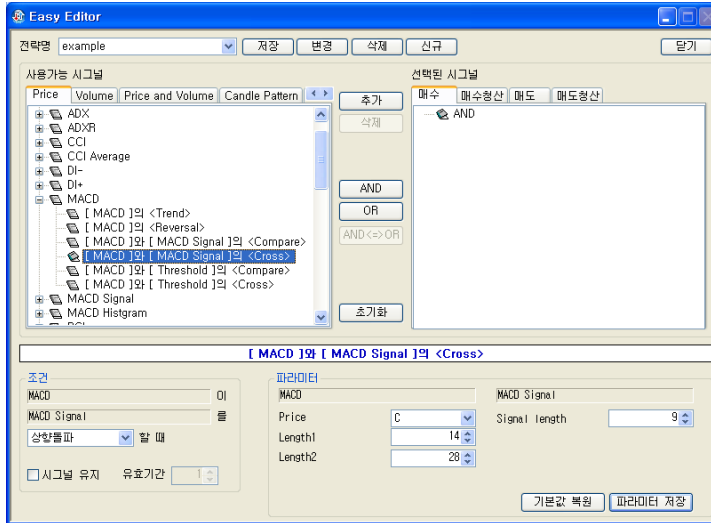


- 2) **Remove** : In order to remove a strategy from the *Selected Signal* window, the user will simply click on the indicator and then click **Remove**.
- 3) **AND** : If multiple indicators need to be satisfied before triggering a trade for the strategy, the user can click on the **AND** button.



- 4) **OR** : This button is used if only one or the other indicator needs to be satisfied.
- 5) **AND <=> OR** : You can change **AND** to **OR**, or **OR** to **AND** selected on the right-hand side.

***상세 매뉴얼 페이지 97에 있는 그림에는 MACD와 MACD Signal Cross로 되어 있는데, 실제 영문 프로그램에는 MACD no MACD Signal Cross로 나오네요. no가 and로 바뀌어야 하는 것 아닌가요? Available Signal은 모두 no로 나옵니다.



5. How to Apply a Strategy Created by Easy Editor

Return to the chart to add your strategy.

- ① Click on **Insert(A)** at the Menu bar, then click on **Strategy**.
- ② Click on **Easy Creator**.

- ③ Select a strategy name desired to apply and click on the **Apply** button (④).
- ⑤ Click on the **Apply** button on the **Format Strategy** screen.

